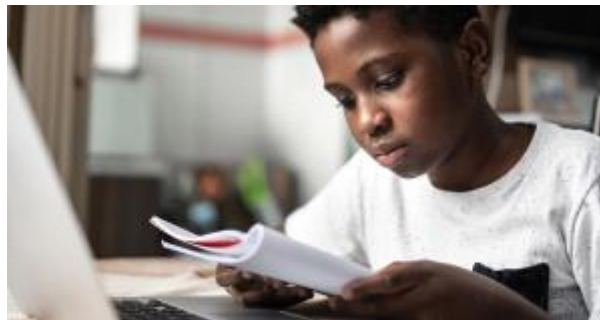


Abernethy Primary & Nursery: Remote Learning and Communication plan.

Remote learning



At Abernethy Primary & Nursery, when children are required to learn at home, we will support learning by continuing to provide consistent, appropriate, high quality, differentiated tasks and activities for our children. Learning will be focused in the core subjects of Literacy, Numeracy and Health and Wellbeing and will be a continuation what children would experience if they were still attending school.



1 - Why might children be learning at home?

Children may require to learn at home for the following reasons:

- Self-isolating related to COVID-19 and able to undertake learning at home
- Sickness related to COVID-19 and able to undertake learning at home
- Whole class, school or local area isolation or lockdown related to Covid -19
- Other medical or additional needs which, due to COVID, require individuals to learn at home
 - Winter weather closure

If your child is isolating at home



Should your child be isolating at home due to testing positive or being in contact with someone who has tested positive, then the following arrangements will be put in place.

If your child is isolating at home and the class is in school, the class teacher will:

- Provide appropriate tasks and activities that links to learning, with a focus on Early Level Play in Learning, Whole school Literacy, Numeracy and HWB
- Provide proportionate feedback on learning

If your child is able to undertake learning, they should:

- Log in to Seesaw/ MS Teams daily to access Literacy and Numeracy learning tasks and activities
- Complete learning to the best of their ability
- Upload completed learning as directed by the staff to Seesaw/ MS Teams

If your child is unwell:

- There is no need to complete any tasks or activities, just get better soon!

As a parent, what can I do to help?

- Ensure their child is engaging with learning tasks and activities
- Use the Seesaw Family App to contact teachers if they wish to ask questions about learning

- Ensure each Microsoft Teams Pupil account is set up, using the username and password details sent from school
- Contact the school via email with any queries

If our school is closed or if your child is isolating at home



Teachers and ECPs will:

- Share learning via a digital platform (Seesaw, MS Teams)
 - Continue to follow learning planned in the current Medium-Term Plans
 - Provide appropriate tasks and activities that links to learning that would have been provided in class, with a focus on Literacy, Numeracy and HWB
 - Provide proportionate feedback on learning
-
- Deliver some 'live' lessons. A reasonable expectation is as follows:
 1. Early Level (ELC/P1) – One remote learning experience per week
 2. First Level (P2-4) – One or two remote learning experiences per week
 3. Second Level (P5-P7) – Two to three remote learning experiences per week
 - Provide some recorded learning sessions and tasks
 - At agreed times use the 'live sessions' (as above) to check in, discuss and engage in person with children.

Children will:

- Access relevant digital platform to access learning
- Try to complete all learning tasks set
- Complete learning activities and tasks by given deadline
- Upload completed learning via Seesaw and/or MS Teams
- Have the opportunity to engage with classmates during 'live lessons' via MS Teams

Parents can:

- Use Seesaw Family App to contact teachers if they wish to ask questions about learning
- Contact the school via email with any queries
- Keep in touch with Abernethy Parent Council via their Facebook page
- Engage in Feedback with the school - Your feedback is important to us, therefore please let us know how everything is going via school email.

Communication Plan



This plan has been created to ensure that excellent communication can continue between school, parents and learners should Abernethy Primary & Nursery have to close due to another lockdown or for any other unforeseen circumstance e.g. winter weather.

Although our primary aim will be to continue learning and teaching for our children, we also want to provide a connectiveness and a feeling of community during a school closure.

How we will keep in touch



Click on the cards below to see how we will keep in touch.

Click here





The school will:

- Keep parents updated via messages on School App and emails
- Share stories and news via the School App
- Share recorded assemblies
- Share creative and fun ideas/events via Seesaw and/or School App
- Send video messages from Senior Leadership Team (SLT) to pupils and parents
- Forward emails from parents to relevant staff members promptly
- Ensure that planned meetings are held via online platforms or telephone calls eg Child's Plan meetings, reporting to parents (reports, parent contact)

Children will:

- Be able to chat and check-in with their teacher during the 'live' lesson
- Have an opportunity to group chat with classmates via the 'live' session with the teacher
- Be able to chat with classmates via the class Seesaw

Parents will be able:

- To ask questions about learning via the Seesaw Family App
- Email the school for any queries
- To request a phone call from SLT or member of staff
- To keep in touch with each other via Abernethy Parent Council
- Set up and use a Microsoft Teams chat with parents when required and keep in touch